



Kings Landing Wedding Services

2024



KINGS LANDING

Table of Contents

Introduction	3
Fees & Rates	4
Photography	6
Indoor Venues	7
Outdoor Venues	16
Receptions	19
General Information & Guidelines	20
Directions	23
Site Map	24
Parking	26
Contact Us	27

Note: The rates and information outlined in this information package are for the 2024 season and are subject to change in the future.

Introduction

Situated on a picturesque bend along the Saint John River, Kings Landing is a scenic, open-air museum that serves as a beautiful, unique location for your wedding. Opened in 1974, Kings Landing features historic houses and outbuildings preserved during the building of the Mactaquac Dam. This vibrant living history village offers a glimpse into 19th century, rural New Brunswick with beautiful backdrops for your wedding photographs. Celebrate your special day with the romance and simplicity of the 1800s while infusing it with your own personal touch.

Kings Landing is pleased to offer wedding services from Wednesday to Sunday from June to September.



2024 Wedding Service Fees

Wedding Ceremony & Venue Fees

All venue reservations include a 1-hour rehearsal the evening before your booking date. Extra charges will apply if you require more than one hour for your rehearsal. Fees are based on weddings of 26 guests or more and are subject to change per wedding size. HST is added to all fees. A gratuity of 15% will be added to all meals.

Ceremony Only \$1,500.00

For any outdoor location or indoor venue listed below. Additional charges may apply.

Ceremony and Reception:

The fee for each location is listed below when you book your wedding ceremony and reception at Kings Landing. Reception dinner fees will be added once meal options and guest numbers are confirmed.

- The King's Head Inn \$950.00
- St. Mark's Anglican Church \$725.00
- Riverside Presbyterian Church \$1,000.00
- The Barn Theatre \$950.00
- Outdoor Location \$500.00

Non-refundable deposit \$1,000.00

A \$500 fee will be returned if cancellations are made more than 30 days before the anticipated wedding date. Kings Landing will keep the full deposit if cancellations are made 30 days or less before the anticipated wedding date.

Wedding Reception Dinner (26 guests or more) Contact for pricing

Served in the King's Head Inn. Your choice of a family style dinner or a formal, plated meal. We will work with you to develop the best option that suits your celebration. Bar service is available for a fee. See details on [page 19](#).

Rehearsal Dinner (26 guests or more) Contact for pricing

Venue reservations include a 1-hour rehearsal the evening before your wedding, but you may want to include a dinner to thank all those who have helped prepare for the big day. We will work with you to develop the best option that suits your celebration. Bar service is available for a fee. See details on [page 19](#).

Horse & Buggy \$250.00/hour

This service is for 2 guests and is only available from June to October during our regular season. Minimum 1 hour booking.

Horse & Wagon Ride \$250.00/hour

This service is for the transportation of the wedding party and/or guests from the ceremony location to the reception location. Minimum 1 hour booking.

2024 Wedding Service Fees Continued

Costume Rentals Starting at \$60.00/costume/week

If you want even more 1800s inspiration in your wedding, our Wardrobe department offers period-appropriate costume rentals and fittings. This additional service may be suitable for the wedding party. Please speak with us for more information.

Historic Home Dressing Area(s) \$250.00/room

A lot of preparation goes into looking your absolute best on your wedding day. If your wedding ceremony is at Kings Landing, you can request the use of one of our historic homes as a dressing area for you and your wedding party. Not only is this convenient, but it also adds one more special element to your already spectacular day.



Photo by Kandice Brown

Photography

Kings Landing is open to the public from June to October and for special events throughout the year. Couples are also welcome to bring their photographer to have wedding pictures taken in the Village during public hours or throughout the year by appointment. Photography sessions must not block public access or interfere with programming at Kings Landing. Please speak with us regarding any questions you have about wedding photography at Kings Landing.



Photo by [Andy Tree](#) | Wedding Photographer

Indoor Venues

The King's Head Inn

The cozy atmosphere of the King's Head Inn offers a special venue for your wedding ceremony, reception and rehearsal dinner in the heart of the Village. Set in 1855, costumed wait staff will ensure your every need is met as you and your guests enjoy your special day. Bar service is also available for a fee. The King's Head Inn can seat from an intimate gathering of 26 guests in the Holyoke Double Parlour to 100 guests in the Simeon Jones Room. A children's menu is available upon request.

Booking Fee:

- with reception and ceremony: \$950.00 (plus the cost of food)
- ceremony only: \$1,500

Note: Due to its historic nature, the King's Head Inn is not an air-conditioned building.



Photo by [Andy Tree](#) | Wedding Photographer

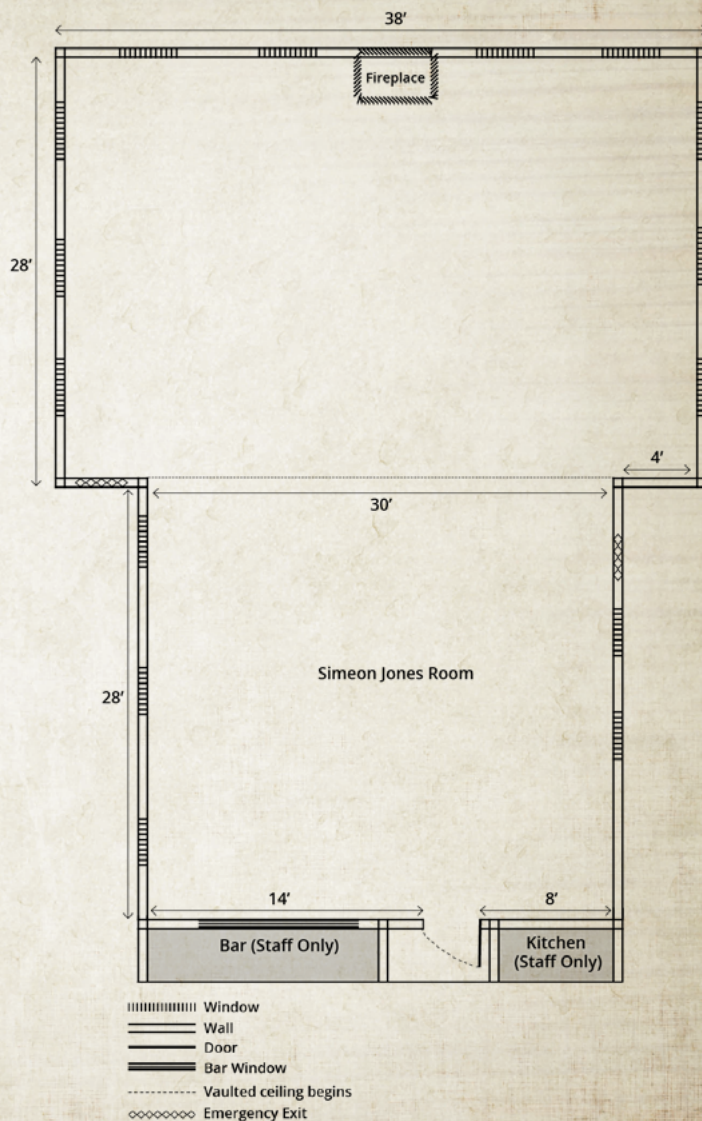


Photo by [Kandise Brown](#)

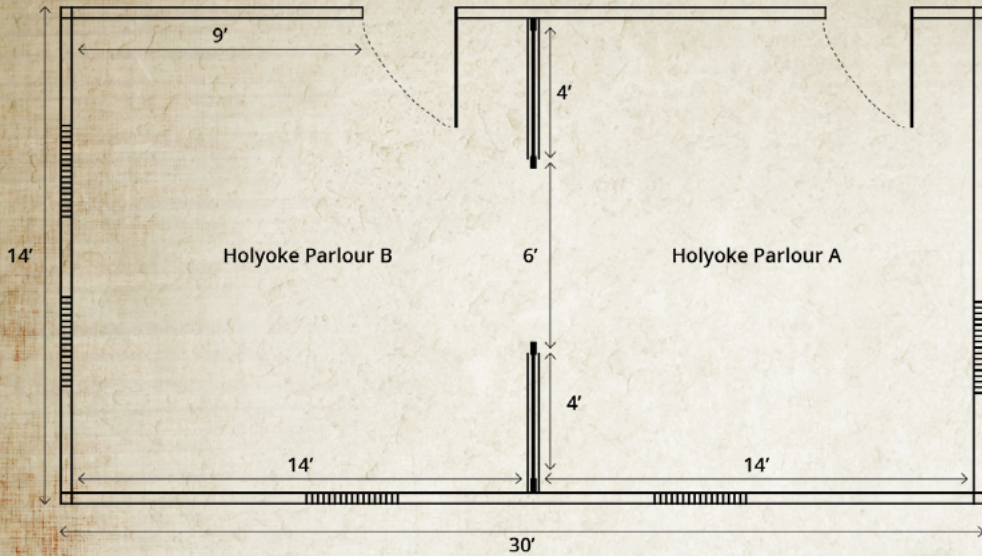
Simeon Jones Room

Capacity: 100 guests maximum.

- Maximum capacity may lower depending on set up for musicians, DJ booth, tables for cake, etc.
- Contact us to discuss floorplan options.



Holyoke Double Parlour



Capacity: 26 guests maximum.

- ||||| Window
- ==== Sliding Door
- ==== Wall
- ==== Door
- ◇◇◇◇◇ Emergency Exit



St. Mark's Anglican Church

Built in the 1850s, St. Mark's Anglican Church is a consecrated Anglican church that offers seating for up to 50 guests. It has lovely wooden arches, extraordinary acoustics, and a beautiful stained glass window. Couples seeking to be married at St. Mark's must provide a minimum of 60 days' notice to the Anglican Diocese of Fredericton and receive written permission from the Anglican Diocese of Fredericton. For information about booking St. Mark's Anglican Church, please contact us.

Booking Fee:

- with reception and ceremony: \$725.00 (plus the cost of food)
- ceremony only: \$1,500.00

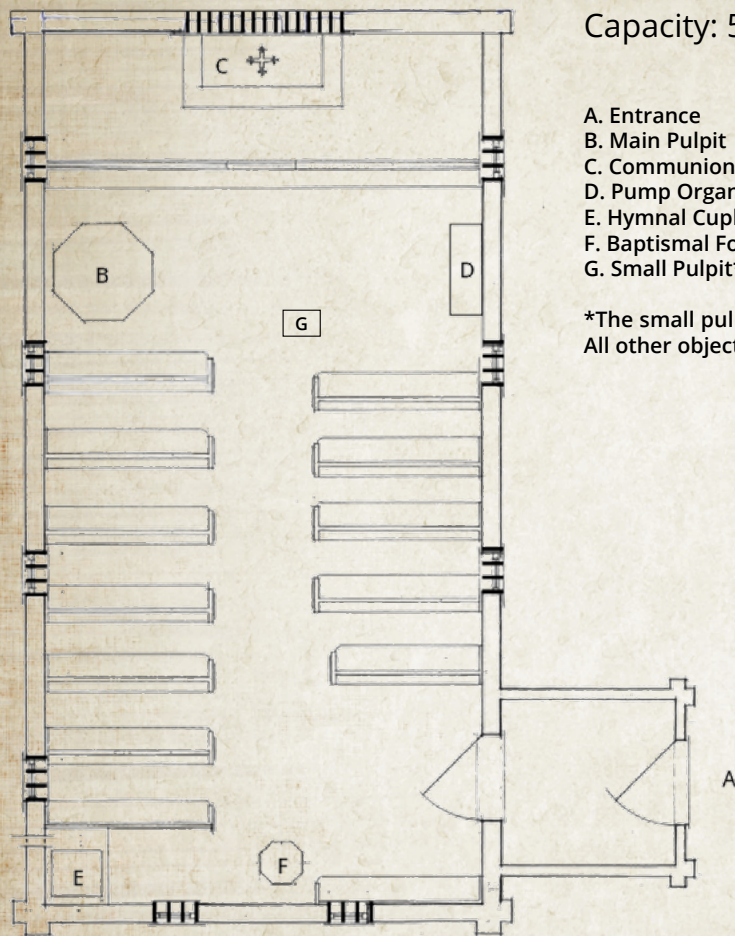


St. Mark's Anglican Church

Capacity: 50 guests maximum.

- A. Entrance
- B. Main Pulpit
- C. Communion Table
- D. Pump Organ
- E. Hymnal Cupboard
- F. Baptismal Fount
- G. Small Pulpit*

*The small pulpit is the only historical object that can be moved in the church.
All other objects are permanent fixtures.



The Riverside Church

The Riverside Presbyterian Church is a quaint country church built in the 1920s. Featuring a rustic wooden ceiling and plenty of natural light, it sits on a country bend that winds its way to the Saint John River. The Riverside Church seats up to 90 guests.

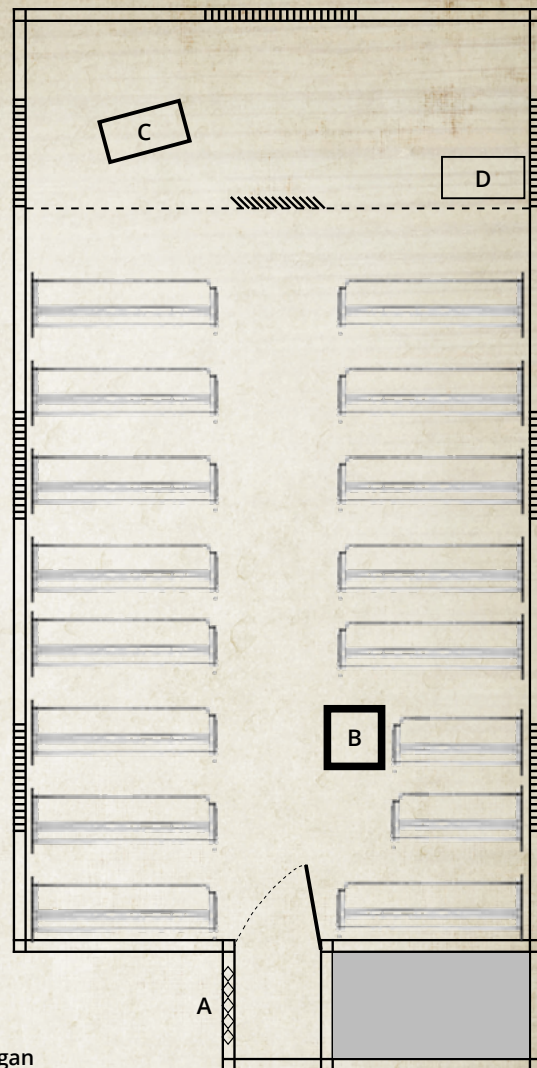
Booking Fee:

- with reception and ceremony: \$1,000.00 (plus the cost of food)
- ceremony only: \$1,500.00



The Riverside Church

Capacity: 75 guests maximum.



- A. Entrance
- B. Stove
- C. Pulpit*
- D. Pump Organ

*The pulpit is the only historical object that can be moved in the church. All other objects are permanent fixtures.

- ||||| Window
- ==== Wall
- Door
- ◇◇◇◇ Entrance/Exit
- \\\\\\\\ 2 Steps to raised pulpit area

The Barn Theatre

The Barn Theatre is a charming, rustic barn on the banks of the Saint John River. It offers stadium style seating for up to 125 guests and has been the location of numerous performances and events over the years. A piano is available for use.

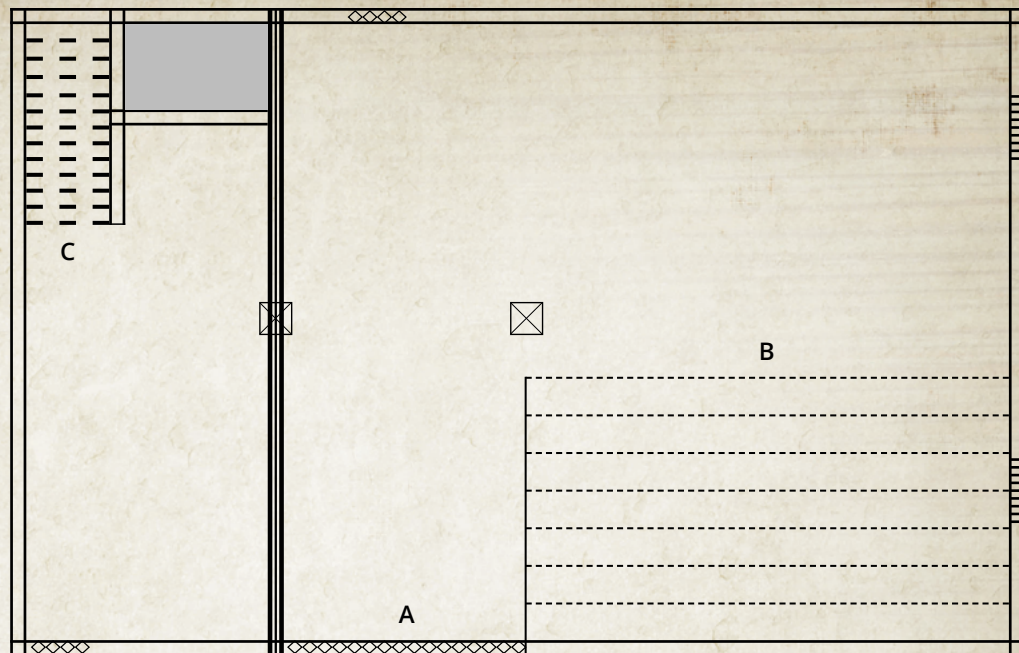
Booking Fee:

- with reception and ceremony: \$950.00 (plus the cost of food)
- ceremony only: \$1,500.00



The Barn Theatre

Capacity: 125 guests maximum.



- A. Main Entrance (ramp access)
- B. Stadium seating (7 levels)
- C. Stairs to loft

- Window
- Wall
- Loft Overhang
- Entrance/Exit
- Wooden Pillar

Outdoor Venues

Kings Landing has over 300 acres of space to explore, but certain venues are more appropriate for wedding ceremonies. The Lint Farm, the King's Head Inn garden, and the Ingraham Garden are great options. Other outdoor areas that may be of interest include the apple orchards by the Hagerman or Heustis houses and the fields by the Morehouse Farm or the Riverside Presbyterian Church. These options can be discussed further with us.

Booking fees for all outdoor locations:

- with reception and ceremony: \$500.00 (plus cost of meals)
- ceremony only: \$1,500.00

Lint Farm

The Lint Farm offers the perfect setup for smaller weddings of up to 50 guests. It has a stunning backdrop with trees, barns, the Riverside Presbyterian Church and a pasture. One of our four-legged friends may just make an appearance. The Lint Farm and barn are very close to the King's Head Inn, so modern conveniences are nearby.



King's Head Inn Garden

Located beside the King's Head Inn Restaurant, this area is perfect for larger outdoor weddings as it can seat approximately 60 guests with access to the patio. Guests will not have to travel far to get to the reception area, and modern conveniences are just steps away.



Ingraham Garden

Located on the banks of the Saint John River, the area behind the Ingraham Garden provides a secluded, picturesque, outdoor venue for your wedding ceremony. Step through the hedge into a colourful English style garden to capture beautiful wedding photographs. A wagon ride for guests and the couple is recommended.



Receptions

Whether you are thanking those involved in your wedding during your rehearsal dinner or celebrating on your wedding day, a reception at the King's Head Inn is a special occasion. We will work with you to develop the best option that suits your celebration. Bar service is available for a fee. We kindly request that you do not bring food, liquor or catering from external sources with the exception of a wedding cake or wedding dessert.

Rehearsal Dinner \$64.99/meal (*plus tax and gratuity*)

Minimum 26 guests.

Reception Dinner \$72.99/meal (*plus tax and gratuity*)

Minimum 26 guests.

Enjoy a three course meal with your choice of soup or salad to start, your choice of roast turkey, prime rib or a vegetarian dish for your main entrée followed by warm gingerbread (optional) and tea or coffee for dessert.

Cocktail Reception Contact for pricing and options

**Please note that the cost per meal is subject to change due to food price fluctuation.*



General Information & Guidelines

In addition to the terms and conditions on contracts between clients and Kings Landing, the following rules apply when hosting any part of your wedding at Kings Landing. We appreciate our guests cooperation to ensure everyone has a fantastic wedding experience.

Set up: The facility rental fee includes chairs and tables set up according to your selected floor plan. Floor plans must be finalized at least one week prior to your booking. Please note that you are not permitted to begin your personal set up prior to the agreed-upon booking time. Other fees may apply if additional setup is required by Kings Landing staff.

Decorations: The guest is primarily responsible for decorating their reception and/or ceremony area. Kings Landing may be able to provide minimal decorations (i.e.: ribbons on chairs, table settings), but all other decorations are the responsibility of the guest. To prevent damage to any historical objects and to respect the natural environment at Kings Landing, please follow these guidelines regarding decorations:

- Tape: Only painter's masking tape designed for painted surfaces is permitted for personal decorations on walls and doors.
- Confetti: To respect the natural environment of the outdoor museum, only birdseed is permitted within the Village grounds or parking lots.
- Candles: Kings Landing can provide smokeless, dripless candles and holders for ceremonial purposes only. Guests are welcome to bring their own candleholders. They must be contained in a fireproof container and fully extinguished after use.
- Historical objects: Churches, buildings and historic homes contain historical objects; as such, the moving of these objects must be approved by and done by Village staff.
- Smaller decorations: Vases, sand containers or similar decorations must be used in a way so as to protect all surfaces from any damage.
- Balloons: For allergy and environmental related reasons, please do not use latex balloons.
- Larger decorations: We require that all arbour or other structures not compromise Kings Landing's historical presentation or guest experience.

- Modern items: To maintain historical accuracy, modern objects must be kept out of view of the general public while on site during operating hours (10 am - 5 pm).
- Responsibility: Kings Landing is not responsible for any items left behind.

Clean up: All personal equipment, decorations, dishes, etc., must be removed following your rental. Kings Landing will remove the decorations for an additional fee, and cannot be held responsible for any damage or loss.

Music: Guests will be required to supply their own music or musician(s). Please note that a live band or a DJ setup may affect the floorplan and seating capacity at the King's Head Inn and other indoor locations. Kings Landing works with a number of musicians for special events throughout the year and can provide a list of local musicians who are familiar with the living history museum upon request.

Churches: When booking one of the two churches, a minimum of 48 hours noticed is required if historical objects or artefacts must be moved. Additionally, the same notice is required if additional seats are required.

Capacity: Fire Department regulations stating the maximum occupancy for each facility are posted. The client is responsible for ensuring this regulation is always enforced.

Liquor permit: The King's Head Inn and its garden are licensed. Ask us about additional licensed areas if interested in hosting part of your wedding elsewhere at Kings Landing. Please do not bring any liquor of your own to your ceremony or reception.

Smoking: Smoking is only permitted in parking lots at Kings Landing.

Animals & environment: Dedicated farmers, gardeners, and labourers work diligently to maintain the animals and natural environment at Kings Landing. Please do not feed the animals or enter their pastures or enclosures. While they are familiar with people, animals are unpredictable by nature; as such, we request all guests respect our farm animals and any other wildlife they may encounter. Likewise, guests are expected to respect the natural environment at Kings Landing including gardens, lawns, trees, plants, and roadways.

Parking: No vehicles are permitted on the museum grounds. Please do not park on grassy areas. The main parking lot by the Welcome Centre is open from 10 am - 5 pm from Wednesday to Sunday from June to October. If your event is after hours and located on the east side of the site, please enter through the service entrance road located on Route 102. See page 26 for more information about parking at Kings Landing.

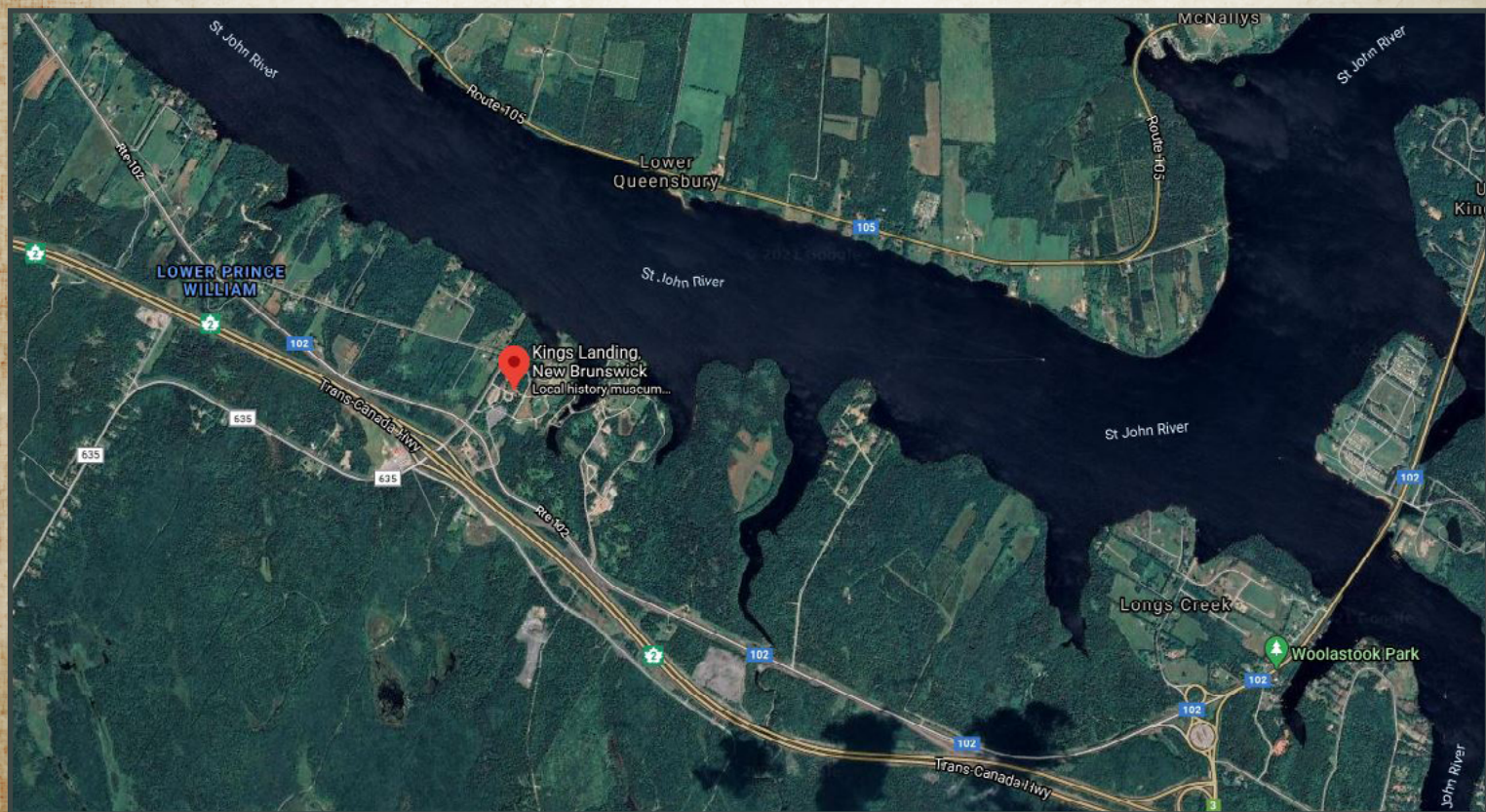
Public Hours of Operation: Please note that some of these guidelines may change or there may be limitations if any part of your wedding takes place in the Village between 10 am - 5 pm while Kings Landing is open to the general public from Wednesday to Sunday. For example: a church can be closed to the general public for a ceremony, but we cannot guarantee that the public will not be nearby if your ceremony takes places outdoors.



Directions

Kings Landing is located in Prince William, New Brunswick, Canada approximately 20 minutes west of Fredericton on Route 102 or via the Trans-Canada Highway at Exit 253.

GPS coordinates: N45 52.630' W066 58.718'.



Village Map

Please refer to this map for the locations of buildings and layout of Kings Landing. Images of venues not shown in this information package can be supplied upon request.

The West Side: Main Entrance to Kings Landing



[Click here for larger image.](#)

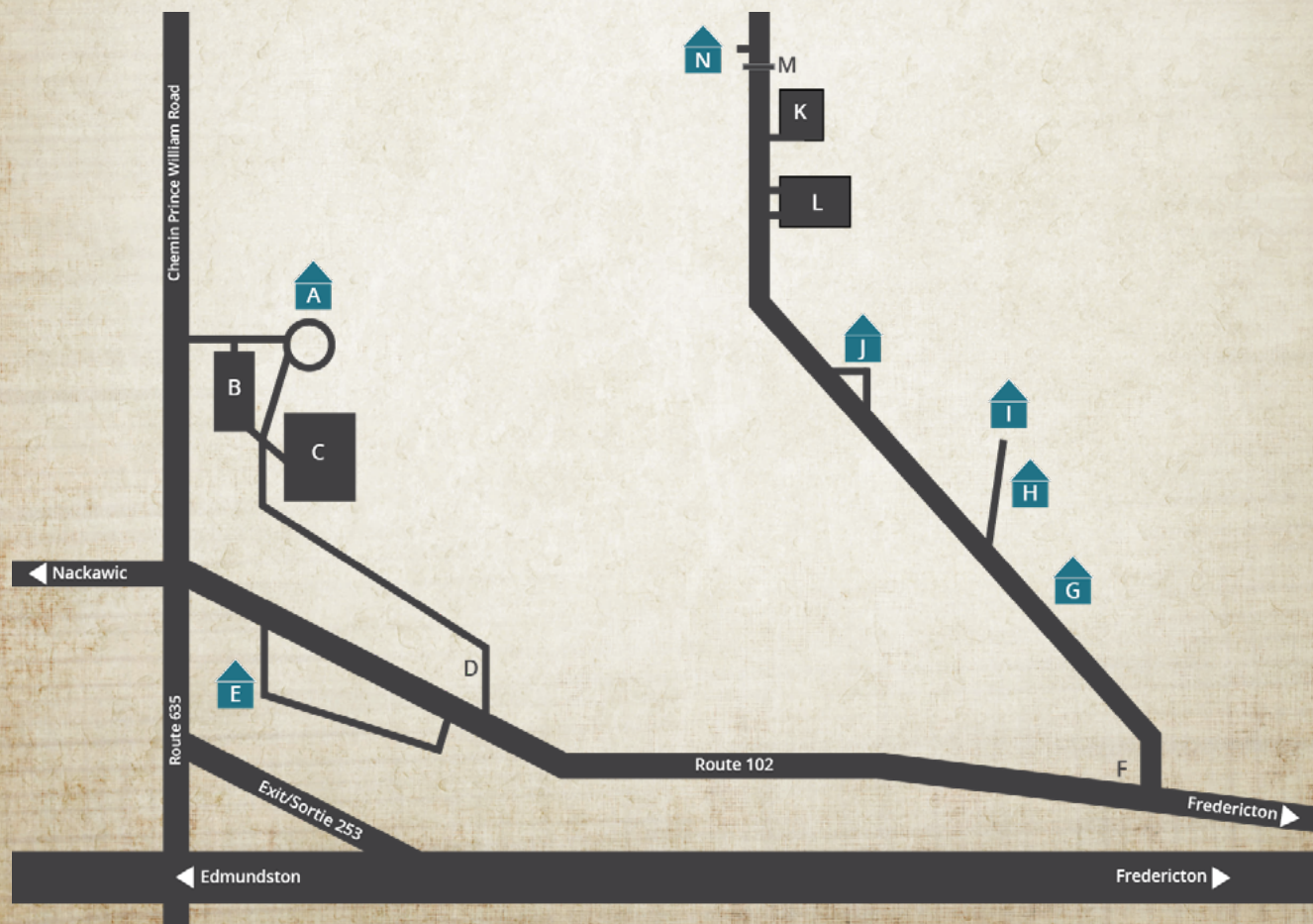
The East Side: Entrance for Special Events



[Click here for larger image.](#)

Parking

- A. Welcome Centre d'accueil
- B. Primary public parking / stationnement public principal
- C. Secondary public parking / stationnement public secondaire
- D. Main entrance / entrée principale
- E. Administrative Building / bureau administratif
- F. Service road entrance / voie de service
- G. Security building / bâtiment de sécurité
- H. Interpretation Centre / centre d'interprétation
- I. Collections Centre / centre des collections
- J. Wardrobe / costumière
- K. Primary special event parking / stationnement pour événements spéciaux principal
- L. Secondary special event parking / stationnement pour événements spéciaux secondaire
- M. Special event entrance gate / porte d'entrée pour événements spéciaux
- N. L'auberge King's Head Inn



Contact Us

For all inquiries related to booking your wedding, please contact us.

Email: Info.KingsLanding@gnb.ca

Phone: (506) 363-4999



Photo by Kandise Brown